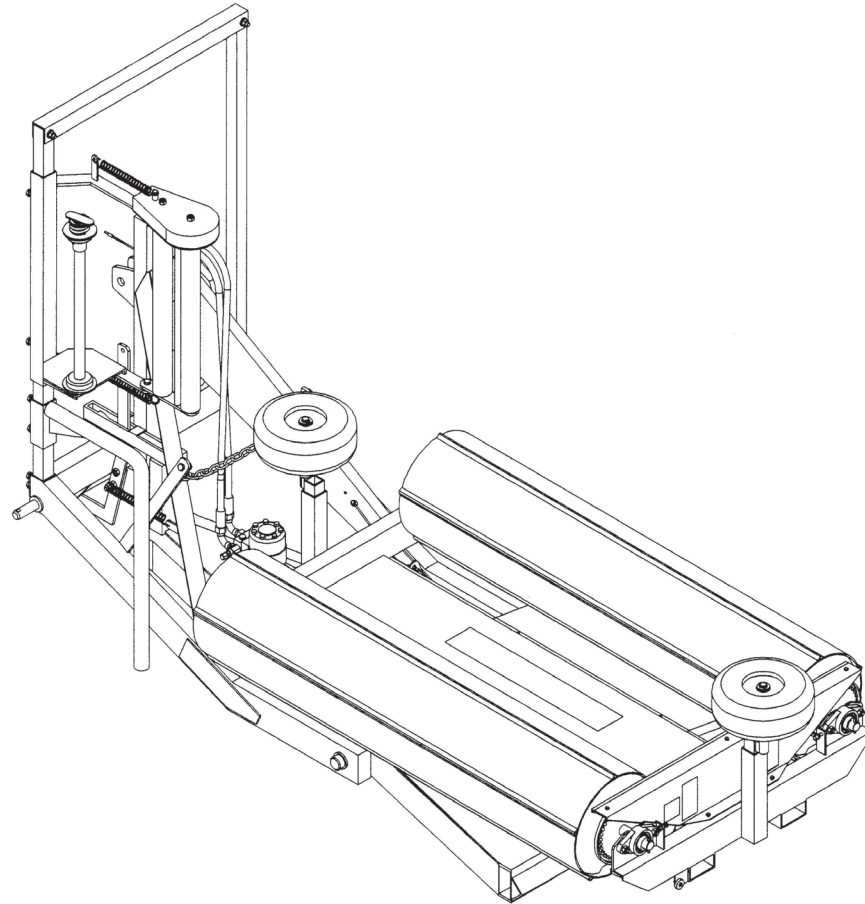


# SPARE PARTS CATALOGUE

## Z552 „SOKÓŁ“ BALE WRAPPER

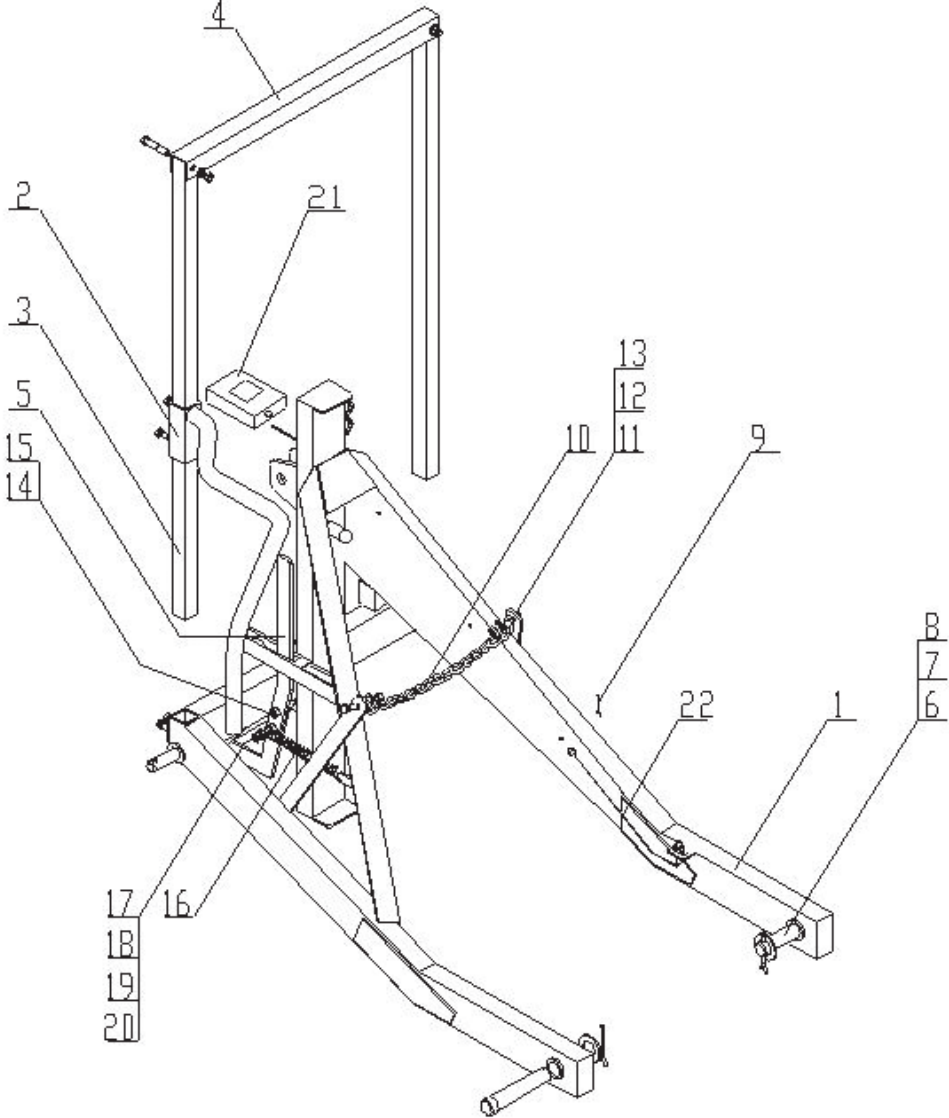


Sokółka 20.....

## LIST OF CATALOGUE ITEMS

No.	Table title	Page number
1.	Complete main frame	3
2.	Wrapping foil feeder	7
3.	Complete lower frame with hydraulic system	9
4.	Complete rotary frame	13
5.	Vertical bale positioning device	17

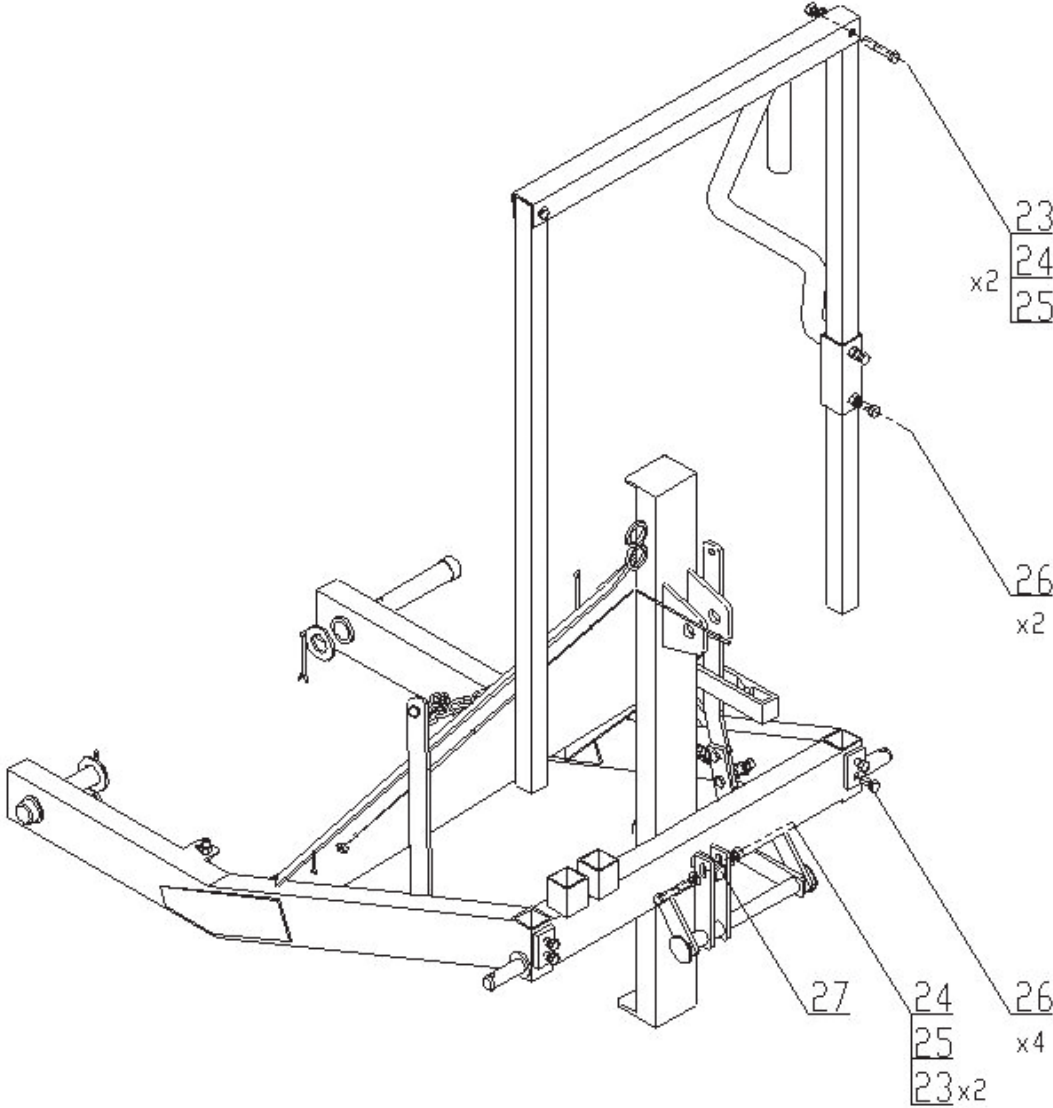
Main frame -1/2



## MAIN FRAME, SET 1/2

No. in dwg	Part name	Drawing no. or standard	Quantity
1	Welded frame	Z 560 – 01.01.00	1
2	Railing, set	Z560 – 01.02.00	1
3	Guide	Z552 – 01.00.03	2
4	Crossbar	Z552 – 01.00.04	1
5	Lever	Z552 – 01.00.05	1
6	Main pin	Z552 – 01.00.07	2
7	Plain washer, Ø37	PN/M – 82005	2
8	Cotter pin, 6.3x71 S – Zn	PN/M – 82001	2
9	Cotter pin, 2.5x25 S – Zn	PN/M – 82001	3
10	Farming chain		1
11	Bolt, M12x35 5,8 – B	PN/M – 82105	2
12	Washer Ø13	PN/M – 82005	2
13	Nut, M12 5 – B	PN/M – 82175	2
14	Bolt, M12x30 5.8 – B	PN/M – 82105	1
15	Nut, M12 5 – B	PN/M – 82175	1
16	Spring	Z552 – 01.00.07	1
17	Bolt, M12x45 5,8 – B	PN/M – 82105	1
18	Nut, M12 5 – B	PN/M – 82144	1
19	Plain washer, Ø13	PN/M – 82005	1
20	Nut, M12 5 – B	PN/M – 82175	1
21	Impulse counter		1
22	Counter cable with a sensor		
23	Bolt, M12x70 5.8 – B	PN/M – 82101	3
24	Nut, M12 5 – B	PN/M – 82175	3

Main frame - 2/2



## MAIN FRAME, SET 2/2

No. in dwg	Part name	Drawing no. or standard	Quantity
25	Plain washer, Ø13	PN/M – 82005	4
26	Bolt, M12x30 5.8 – B	PN/M – 82105	6
27	Lever pin	Z552 – 01.00.06	1

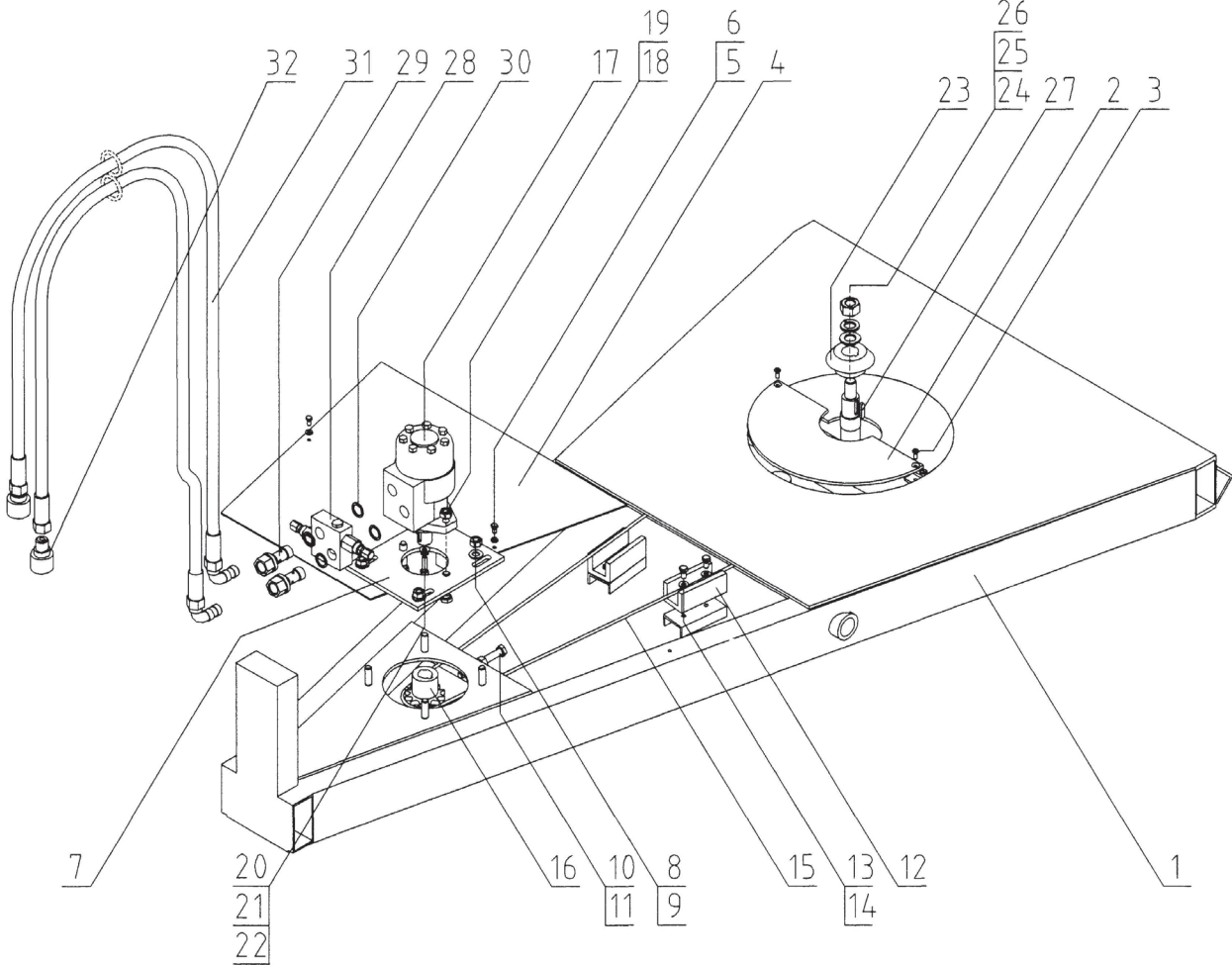


## WRAPPING FILM FEEDER, SET

No. in dwg	Part name	Drawing no. or standard	Quantity
1	Feeder arm I	Z552 – 02.01.00	1
2	Feeder arm II	Z552 – 02.17.00	1
3	Wheel enclosure	Z552 – 02.02.00	1
4	Wrapping film lock	Z552 – 02.03.00	1
5	Lock spring	Z552 – 02.00.04	1
6	Special washer	Z 552 – 02.00.05	1
7	Spring ring, Z – 38	PN/M – 85111	1
8	Spring pin, 6x50	PN/M – 85023	1
9	Upper pressure element	Z552 – 02.00.08	1
10	Lower pressure element	Z552 – 02.00.09	1
11	Gear wheel, Z – 21	Z552 – 02.00.10	1
12	Gear wheel, Z – 34	Z552 – 02.00.11	1
13	Pressure roller	Z552 – 02.12.00	2
14	Roller axle	Z552 – 02.00.13	2
15	Screw, M6x16 5.8 – B	PN/M – 82208	6
16	Bearing, 6203 RS	PN/M – 86401	4
17	Tension spring	Z552 – 02.00.16	2
18	Bolt, M12x30 5.8 – B	PN/M – 82105	3
19	Bolt, M12x35 5,8 – B	PN/M – 82105	1
20	Nut, M12 5 – B	PN/M – 82175	6
21	Plain washer, Ø13	PN/M – 82005	5



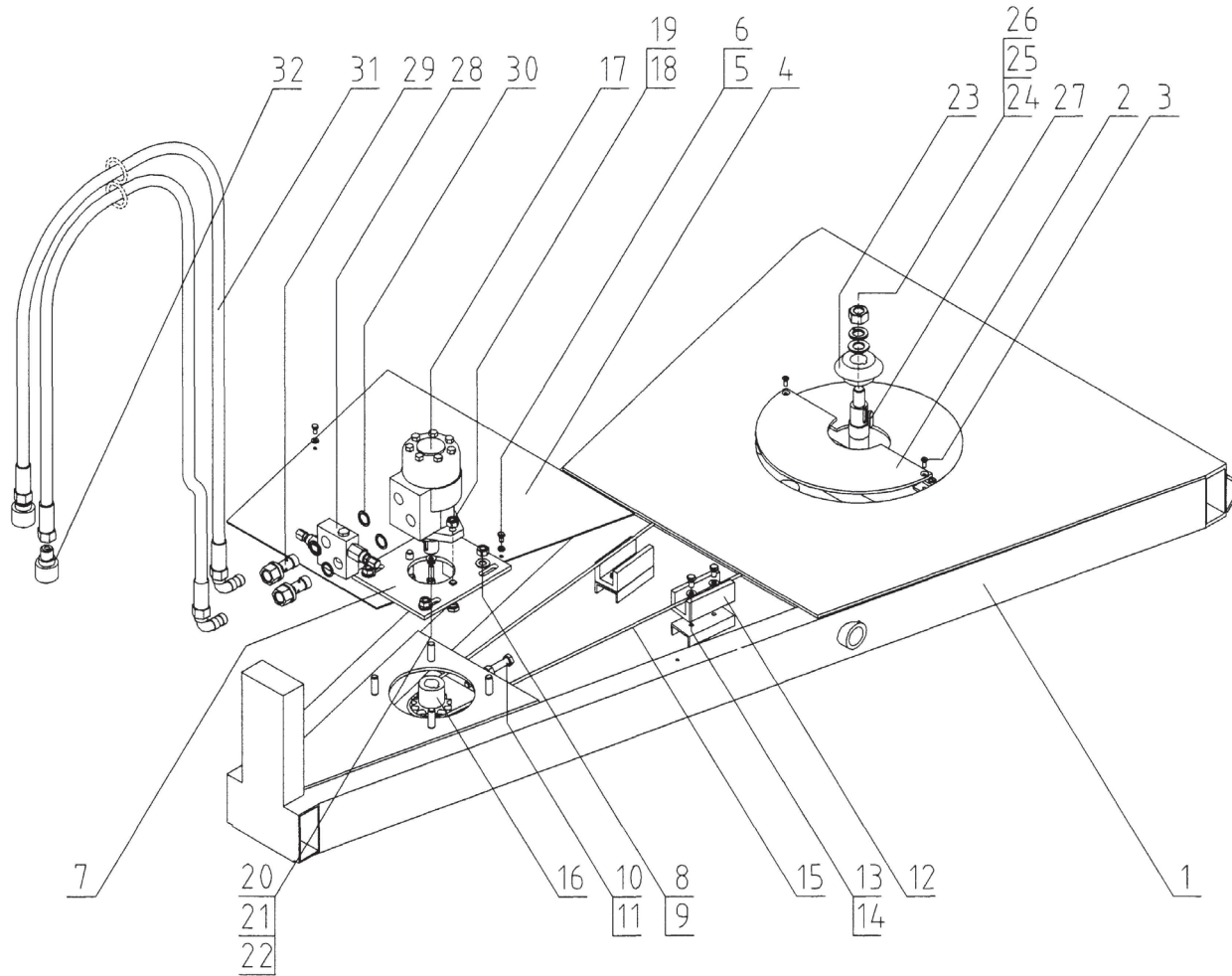
**Lower frame with hydraulic system, set**



## COMPLETE LOWER FRAME WITH HYDRAULIC SYSTEM 1/2

No. in dwg	Part name	Drawing no. or standard	Quantity
1	Chassis frame	Z552 – 03.00.00	1
2	Gearbox guard	Z 552 – 00.00.10	2
3	Screw, M6x16 5.8 – B	PN/M – 82208	4
4	Lower guard	Z552 – 00.00.14	1
5	Bolt, M6x16 5,8 – B	PN/M – 82105	2
6	Spring washer Ø6.1	PN/M – 82008	2
7	Engine base	Z552 – 00.09.00	1
8	Plain washer, Ø13	PN/M – 82005	4
9	Nut, M12 5 – B	PN/M – 82175	4
10	Bolt, M12x100 5.8 – B	PN/M – 82105	1
11	Nut, M12 5 – B	PN/M – 82144	1
12	Chain guide	Z552 – 03.00.22	2
13	Screw, M8x20 5.8 – B	PN/M – 82208	4
14	Plain washer, Ø8.4	PN/M – 82005	4
15	Chain, 10 B	PN/M – 84168	1
16	Gear wheel, Z – 12	Z552 – 00.08.00	1
17	Hydraulic motor	OMR 200 G1/2	1
18	Bolt, M12x45 5,8 – B	PN/M – 82105	2
19	Nut, M12 5 – B	PN/M – 82175	2
20	Bolt, M8x30 8,8 – B	PN/M – 82105	1
21	Spring washer Ø8.2	PN/M – 82008	1
22	Plain washer, Ø10.5	PN/M – 82030	1
23	Bevel gear, Z – 17	Z552 – 00.00.13	1
24	Plain washer, Ø21	PN/M – 82005	1

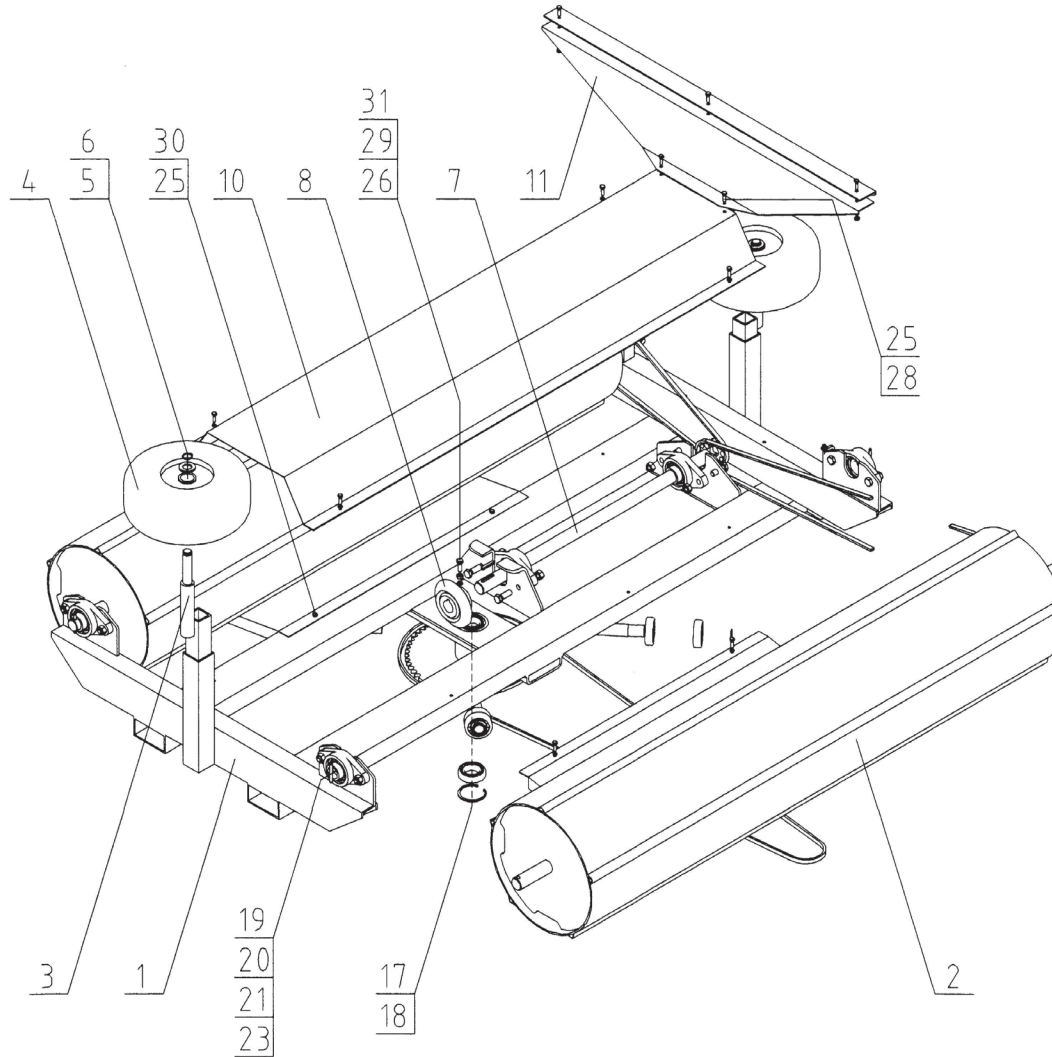
# Lower frame with hydraulic system, set



**COMPLETE LOWER FRAME WITH HYDRAULIC SYSTEM 2/2**

<b>No. in dwg</b>	<b>Part name</b>	<b>Drawing no. or standard</b>	<b>Quantity</b>
25	Spring washer Ø20.5	PN/M – 82008	1
26	Nut, M20 8 – B	PN/M – 82144	1
27	Parallel key, A8x7x36	PN/M – 85005	1
28	Hydraulic block	ZP – 2 – 00/A	1
29	Hydraulic screw	Z552 – 00.00.23	2
30	Plain washer, Ø20.5 Cu		4
31	Hydraulic hose	P12/P11 L = 2000	2
32	Plug, quick-release coupling, M22x1.5	ZSR6 – 160 – 13/200	2

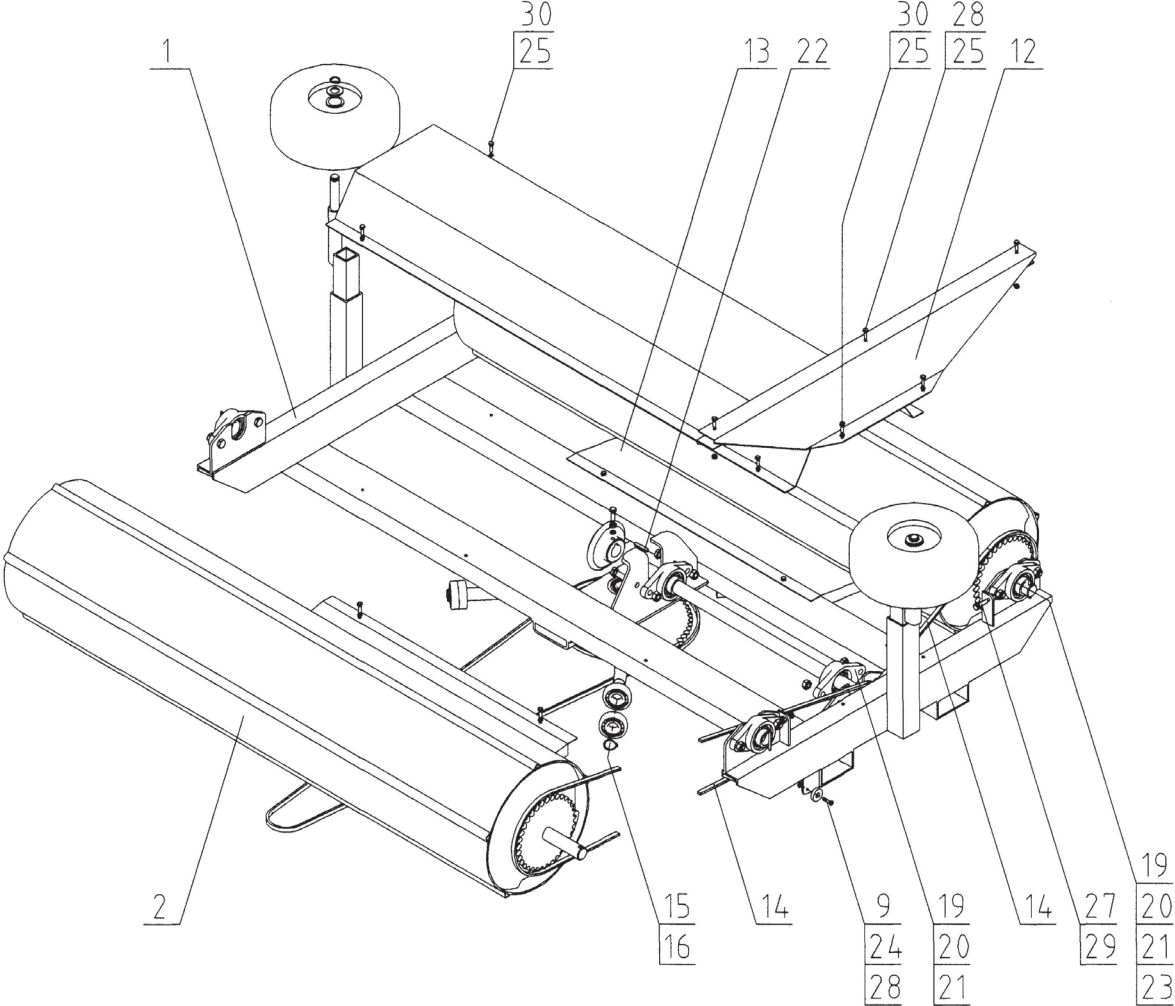
# Rotary frame, set -1/2



## ROTARY FRAME, SET 1/2

No. in dwg	Part name	Drawing no. or standard	Quantity
1	Rotary frame	Z552 – 04.00.00	1
2	Drum, set	Z552 – 06.00.00	2
3	Wheel console	Z 552 – 05.00.00	2
4	Wheel with hub, 400x4.00		2
5	Plain washer, Ø21	PN/M – 82005	2
6	Spring ring, Z – 20	PN/M – 85111	2
7	Drive shaft, set	Z552 – 00.11.00	1
8	Bevel gear, Z – 25	Z552 – 00.00.12	1
9	Revolution sensor magnet		1
10	Middle guard	Z552 – 00.00.15	1
11	Rear guard I	Z 552 – 00.00.16/I	1
12	Rear guard II	Z 552 – 00.00.17/I	1
13	Bearing guard	Z552 – 00.00.18	2
14	Chain, 10 B	PN/M – 84168	2
15	Bearing, 6305 RS	PN/M – 86100	8
16	Spring ring, Z – 25	PN/M – 85111	4
17	Bearing, 6007 RS	PN/M – 86100	2
18	Spring ring, W – 62	PN/M – 85111	1
19	Bearing assembly, UCFL206	PN ISO 9628:1996	6
20	Bolt, M12x35 5,8 – B	PN/M – 82105	12
21	Nut, M12 5 – B	PN/M – 82175	12
22	Parallel key, A8x7x36	PN/M – 85005	1
23	Spring pin, 6x50	PN/M – 85023	4
24	Screw, M6x25 4.8 – B	PN/M – 82008	1
25	Bolt, M6x16 5,8 – B	PN/M – 82105	15

Rotary frame, set - 2/2

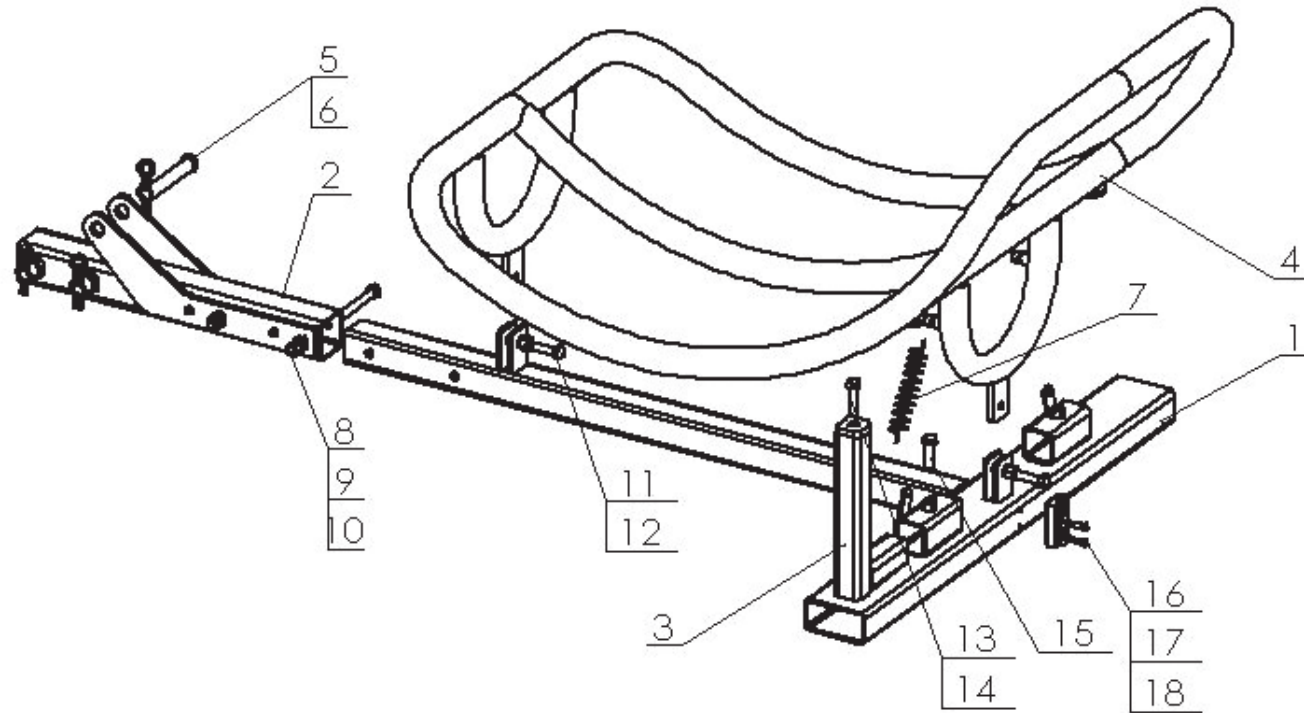


## ROTARY FRAME, SET 2/2

No. in dwg	Part name	Drawing no. or standard	Quantity
26	Bolt, M8x25 8,8 – B	PN/M – 82105	2
27	Bolt, M 8x30 5.8 – B	PN/M – 82105	2
28	Nut, M6 5 – B	PN/M – 82175	6
29	Nut, M8 5 – B	PN/M – 82144	4
30	Spring washer Ø6.1	PN/M – 82008	10
31	Spring washer Ø8.2	PN/M – 82008	2



## Vertical bale positioning device



## VERTICAL BALE POSITIONING DEVICE

No. in dwg	Part name	Drawing no. or standard	Quantity
1	Chassis frame	Z-552 19.01.00	1
2	Suspension	Z-552 19.02.00	1
3	Bumper	Z-552 19.03.00	1
4	Cradle	Z-552 19.04.00	1
5	Pin	Z-552 19.00.05	3
6	Cotter pin Ø6	DIN 11023	3
7	Spring I	Z-552 02.00.16	1
8	Bolt, M12x100 8.8-B	PN/M-82101	2
9	Nut, M12-8	PN/M-82144	2
10	Spring washer, 12.2	PN/M-82008	2
11	Bolt, M12x45 8.8-B	PN/M-82105	2
12	Nut, M12-8	PN/M-82175	2
13	Bolt, M12x30 8.8-B	PN/M-82105	1
14	Nut, M12-8	PN/M-82153	1
15	Bolt, M12x25 8.8-B	PN/M-82105	1
16	Triangle hitch		1
17	Bolt, M6x16 5.8-B	PN/M-82105	2
18	Plain washer, 6.4	PN/M-82005	2